



**Goldenrod**  
*Solidago sp.*



**Pine Lily**  
*Lilium catesbaei*



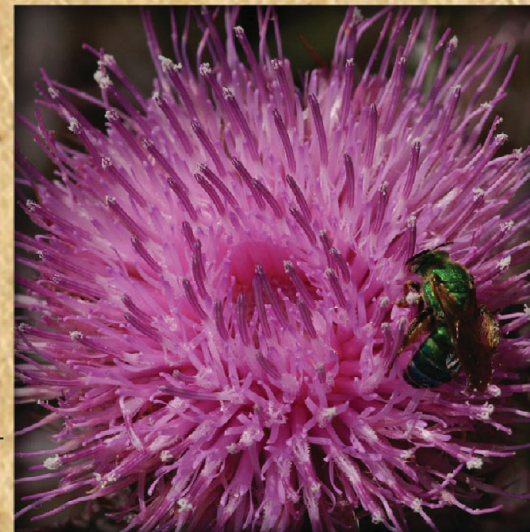
**Swamp Milkweed**  
*Asclepias perennis*



**Rosy Camphorweed**  
*Pluchea baccharis*



**Sky-Blue Lupine**  
*Lupinus diffusus*



**Purple Thistle**  
*Cirsium horridulum*



**Pine Hyacinth**  
*Clematis baldwinii*



**Southeastern Sneezeweed**  
*Helenium pinnatifidum*



**Scarlet Rosemallow**  
*Hibiscus coccineus*



**Skyflower**  
*Hydrolea corymbosa*



**Virginia Saltmarsh Mallow**  
*Kosteletzkya pentacarpos*



**Gopher Apple**  
*Licania michauxii*



**Florida Air Plant**  
*Tillandsia simulata*



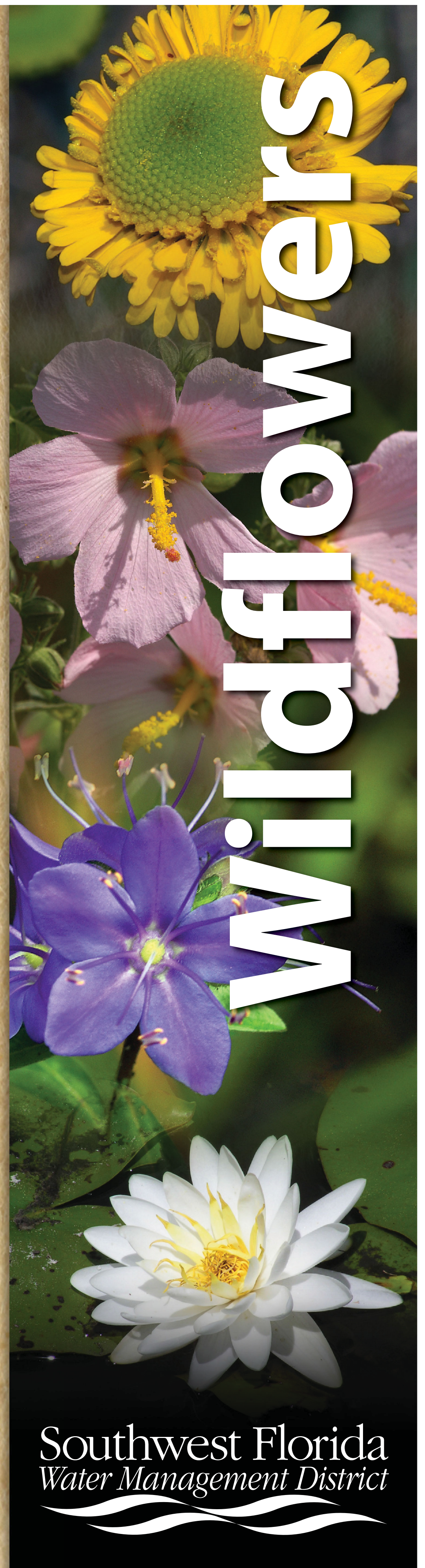
**American White Waterlily**  
*Nymphaea odorata*



**Purple Passionflower**  
*Passiflora incarnata*

Through its efforts to protect water resources, the Southwest Florida Water Management District buys and manages land. As a result, plants and animals that live on these lands are also protected and the public can enjoy recreational and educational activities in the great outdoors. For a more comprehensive list containing birds, mammals, butterflies, frogs, toads, insects, trees, shrubs, reptiles, wildflowers and natural communities, please visit

**WaterMatters.org**



**Southwest Florida**  
*Water Management District*